

MV: LIZZY CONFIDENCE

General

Class	NKK
Class notation	BCM BC-XII, GRAB
Ship type	DHBC
Year built	APRIL 2025
Yard	JNS, China
DD due	APRIL 2030
SS due	APRIL 2030

Flag	Portugal
Registry	Madeira
Reg. nr.	TEMP1028M
Call Sign	CQ2429
IMO nr.	1079929
Telex	TBA
Phone	TBA
Email	lizzyconfidence@fleet.hellasconfidence.gr

Speed & Consumption

Laden	abt.13.0 kts on abt.19.0 IFO + abt.0.1 mt LSMGO
Eco (WOG)	abt.12.0 kts on abt.15.0 IFO + abt.0.1 mt LSMGO
Port Idle	abt.2.5 mt IFO + abt.0.1 mt LSMGO
Port WWW	abt.4.5 mt IFO + abt.0.1 mt LSMGO

Vessel consumes ULSGO when manoeuvring and sailing in narrow waterways and canals. Speed / Cons. upto windforce BF 4, max. wave height 1.25 m, max. swell height 2.00 m, no adverse current, no influence of swell and even-keel condition. Bunker specs: IFO ISO 8217:2017 (E) RMG 380 / ULSGO: ISO 8217:2017 (E) DMA (max 0.1% Sulphur)
Sulphur specs and each delivery and burning of specific types (grades) of bunkers always to comply with MARPOL regulations a/o EU directives a/o USA a/o any other national regulations including latest amendments

Principal dimensions

Length over all	179.90	m
Breadth moulded	30.00	m
Depth moulded	15.20	m
Summer draft	10.95	m
Summer dwt	40,489	MT
TPC (summer)	50.8	t/cm
GT/NT	25,171/13,740	T
Lightweight	9515	T
Suez	tbm	T
Panama	tbm	T

W/L-H/c Summer	TBA	m
W/L-H/c Ballast mid.	TBA	m
Keel – Top H/c	17.40	m
Keel – Top of mast	41.78	m
VLSFO cap. (85%)	1,009	m³
ULSGO cap. (85%)	309	m³
FW capacity (100%)	337	m³
Ballast cap. (100%)	16,223	m³
Slop tanks (CH wash)	199	m³
Grey water holding tk	148	m³

Operational restrictions

No mixing of new bunkers with bunkers already onboard. Vessel is only allowed to work single hook on a single hatch Constants could be affected due to vessel retaining onboard of hold cleaning water and/or grey water as per MARPOL regulations.
Bunker tank capacities could be affected due to vessel having to keep different IFO and ULSGO grades separated as a consequence of compliance with Marpol regulations a/o EU directives a/o USA a/o any other national regulations including latest amendments.
This vessel is member of an independent fuel testing system (Intertek Lintec). Charterers or their representatives are always at liberty to witness the sampling during any bunkering of the vessel under the charter and any discrepancies found between supplier's sample and Intertek Lintec sample then the Intertek Lintec sample to be final and binding. As long as the analysis results of the fuel oil onboard has not been received and approved by Owners, the vessel may have to use ULSGO instead

Cargospaces

Cap. (cuft)	Grain	Bale
C/H #1	299753	290748
C/H #2	377587	370030
C/H #3	377587	370030
C/H #4	377587	370030
C/H #5	351384	340860
Total	1783898	1741698

Floor space	LxBf/Ba	Hatch Size lxb
C/H #1	26.4m x 6.93m/25.26m	16 m x 19.40m
C/H #2	27.2m x 25.26m	20 m x 25.26m
C/H #3	27.2m x 25.26m	20 m x 25.26m
C/H #4	27.2m x 25.26m	20 m x 25.26m
C/H #5	26.4m x 25.26m/7.37m	20 m x 25.26m

drft(m)	Deadweight (t)
10,95	Summer 40489
11,17	Trop. 41648
11,42	TropF. 41621
11,19	Fresh 40489
10,72	Winter 39331

Ventilation	Nat.
Airchanges	N/A
CO2 fitted	Fitted
A60 bkhd	Fitted
Smoke det.	Fitted
Aussie fitted	Fitted
Dehumidifier	N/A

*Note: In case of heavy cargoes to be loaded, the maximum quantity is to be in accordance with vessel's loading and stability booklets.

Strength

	CH#1	CH#2	CH#3	CH#4	CH#5		
Hatchcovers	3,3	3,3	3,3	3,3	3,3	t/m²	*observe load manual
Weatherdeck	4,7	4,7	4,7	4,7	4,7	t/m²	*Except betw. hatches
Tanktop	TBA	TBA	TBA	TBA	TBA	t/m²	*Local strength
Tanktop	20	15	20	15	20	t/m²	*Uniform distributed
Steel coils	Standard coil loading condition – 2 tiers x 25 T coils (dim. W 2 m x L 2 m), 4 dunnages						
*Note 1: Alternate hold loading condition (Nos. 2 & 4 may be empty)							
*Note 2: Other coil loading conditions subject to owners approval of local stress calculations							

Deck equipment

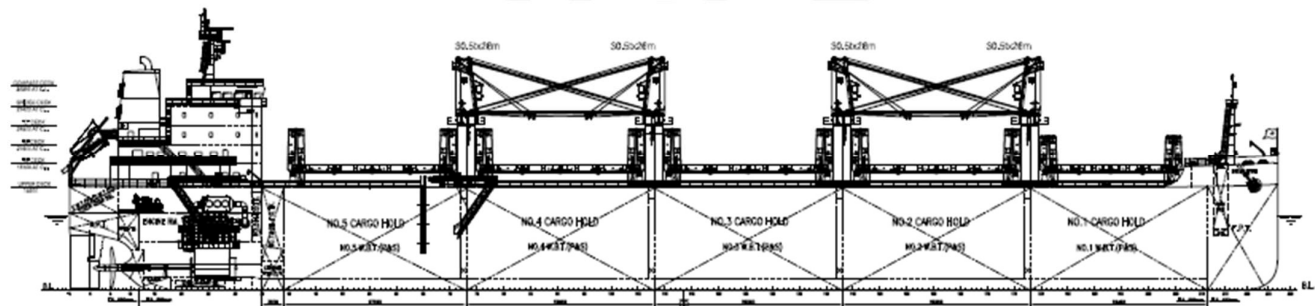
Hatch type	Hydr. End-folding type, DS
Maker	HuaHai Marine
Cargo gear type	Electro hydr. 30.5t x 4 cranes
Maker	Masada / MHI
Outreach	11.00 mtr
Grab handling	24 max. grab(bucket)+cargo
Grabs fitted	3 x 12 M³ Guven
(de)ballast Cap.	Max. 1250 m³/h

Features

ITF fitted	Yes
Log fitted	No
WBTS fitted (USCG approved)	Yes
Lakes fitted	No
Suitable for grab discharge	Yes

Machinery details

Main engine	MAN B&W S50ME-C9.7 TIER III
NCR	4510 KW @ 89 rpm
Aux. engines	Yanmar 6 EY18ALWS – 3 sets
Electrical	620 KW/ 450V/ 60 Hz
Freshwater generator	Max. 15t/day



All details "about" given in good faith, without guarantee.