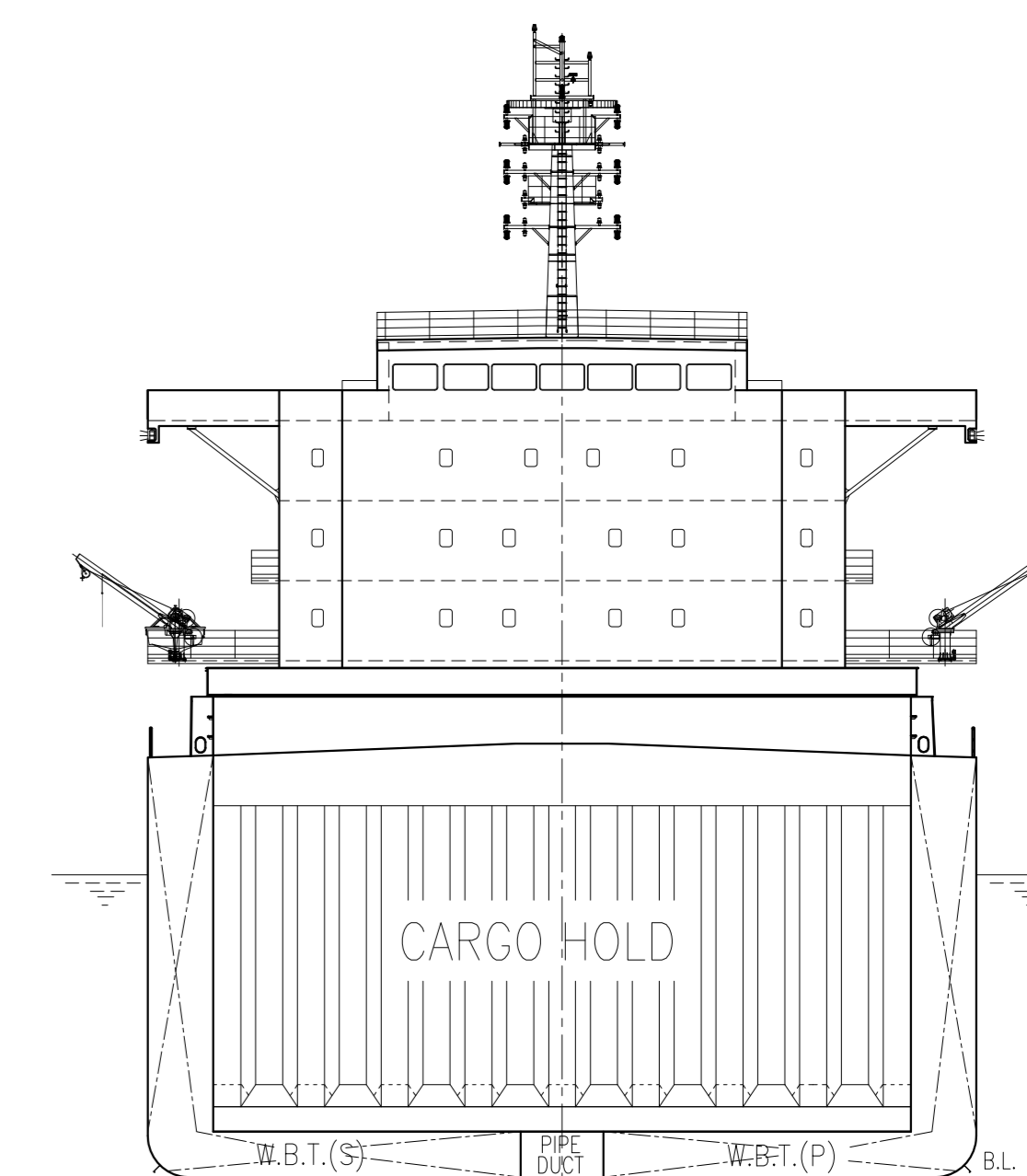
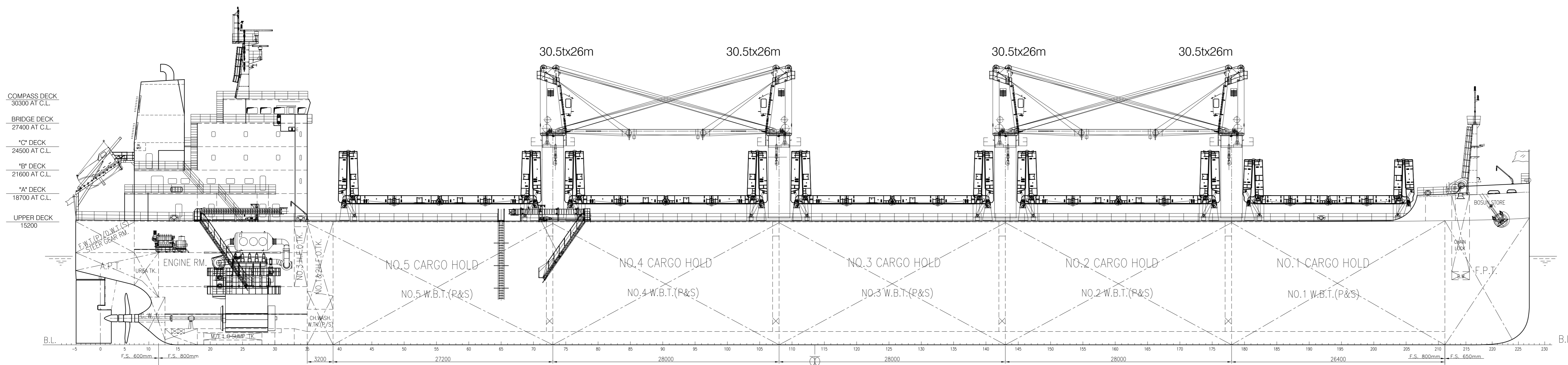
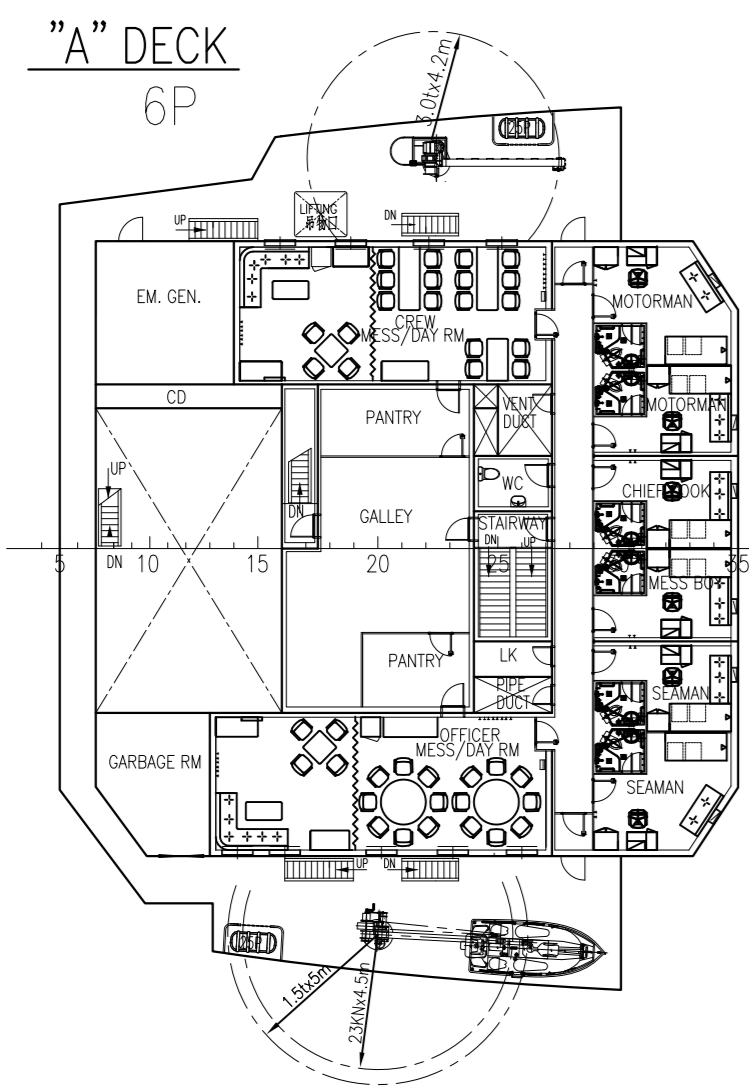


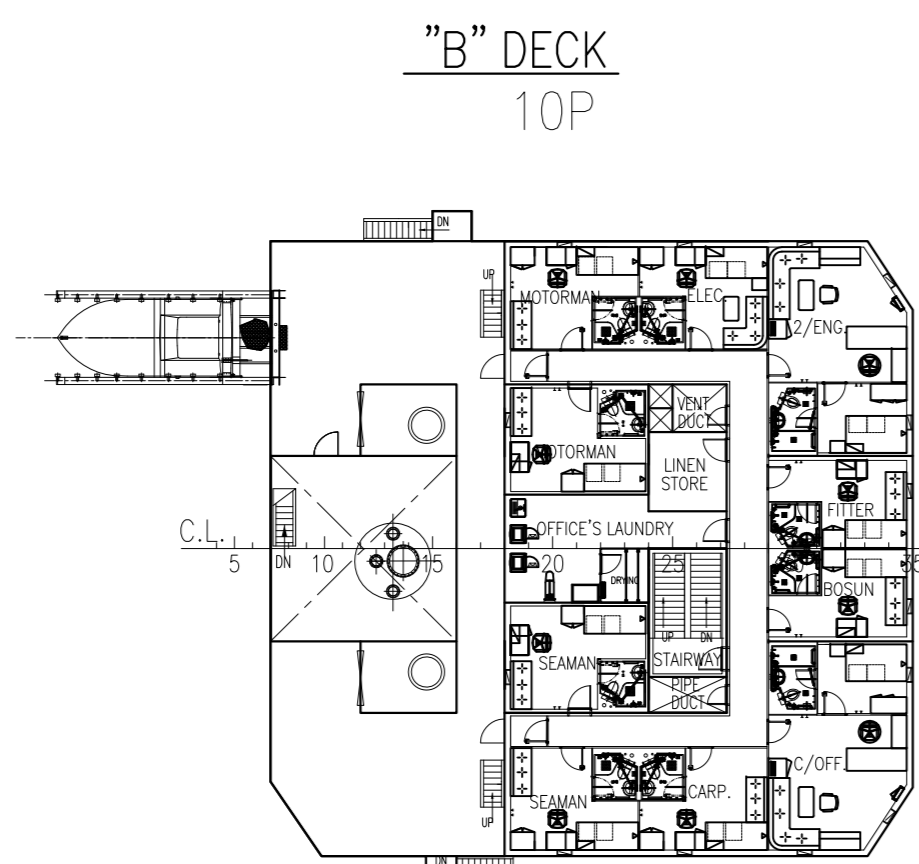
PROFILE



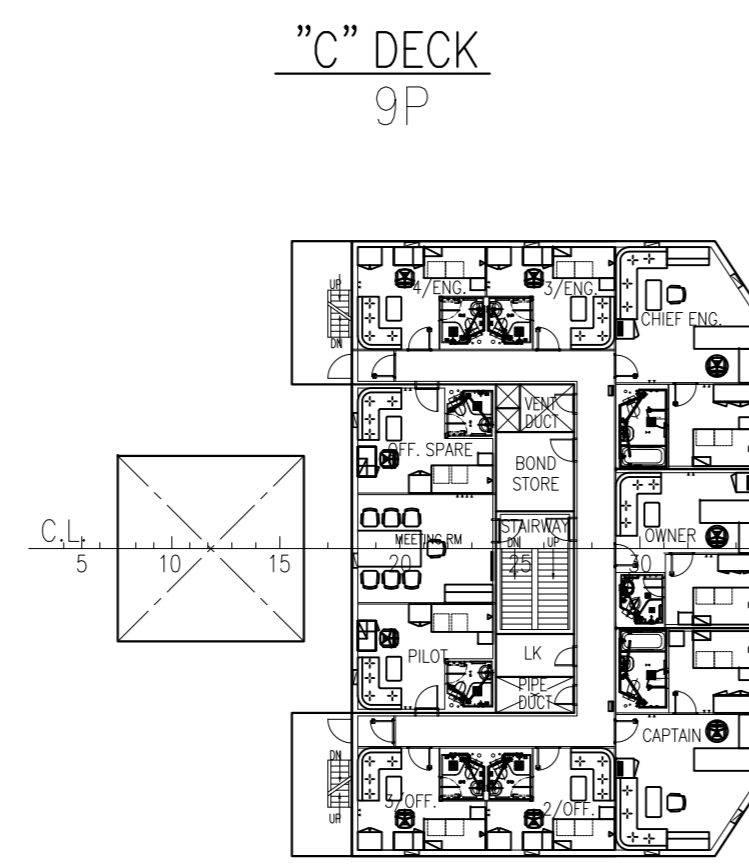
"A" DECK
6P



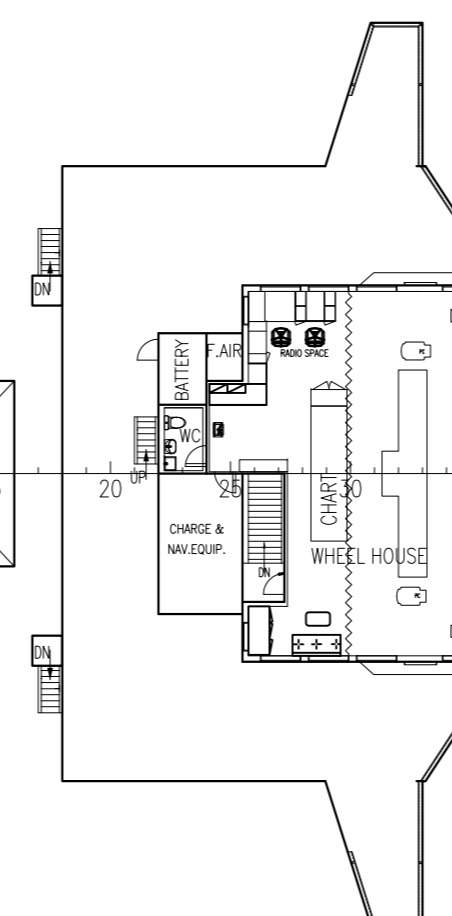
"B" DECK
10P



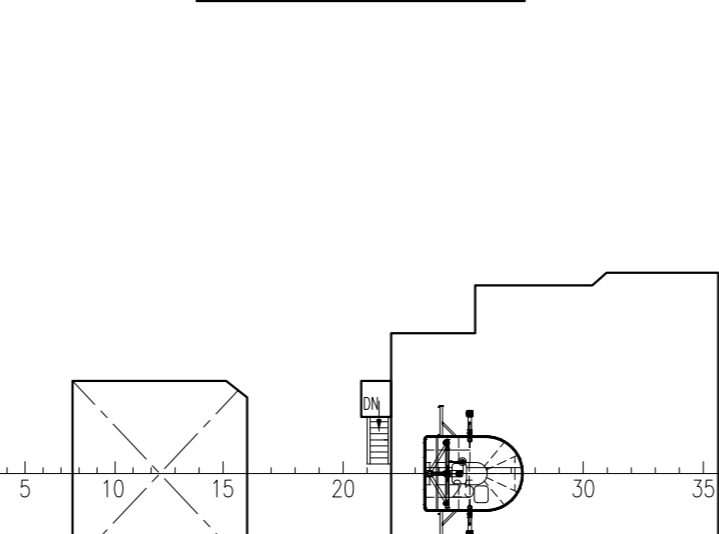
"C" DECK
9P



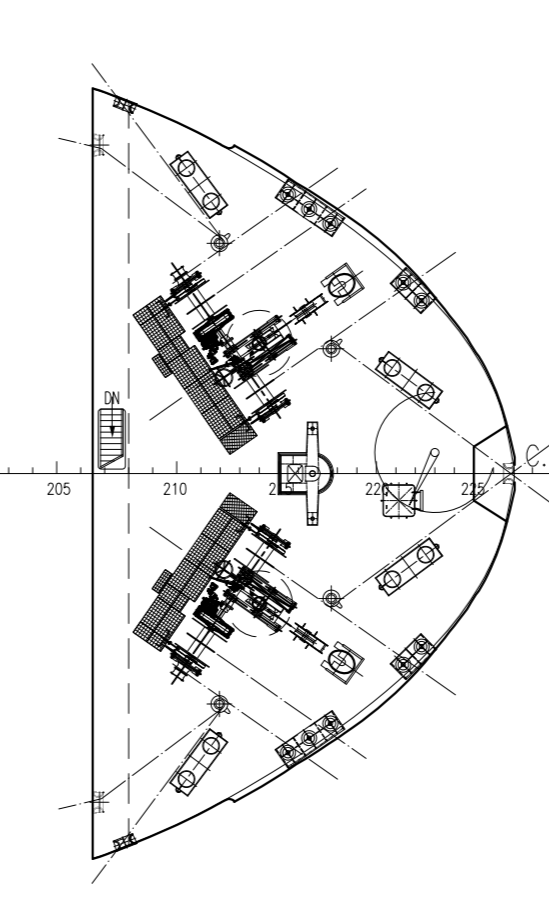
BRIDGE DECK



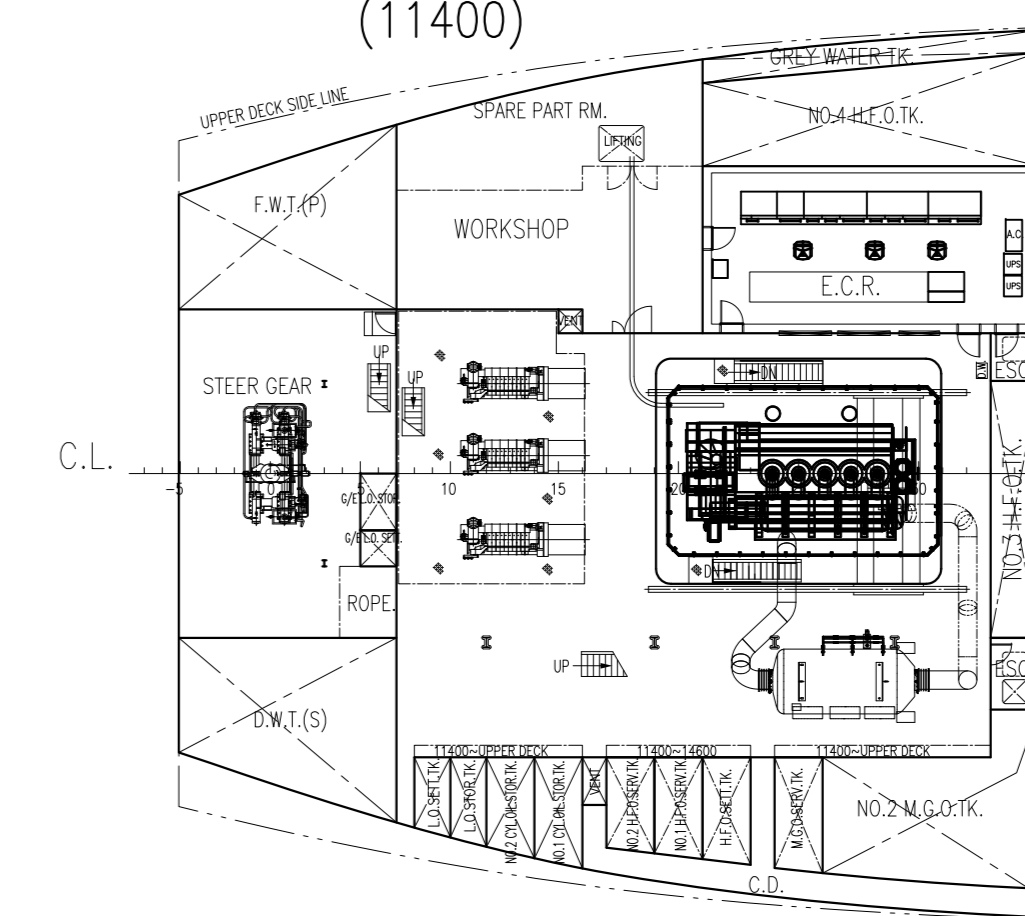
COMPASS DECK



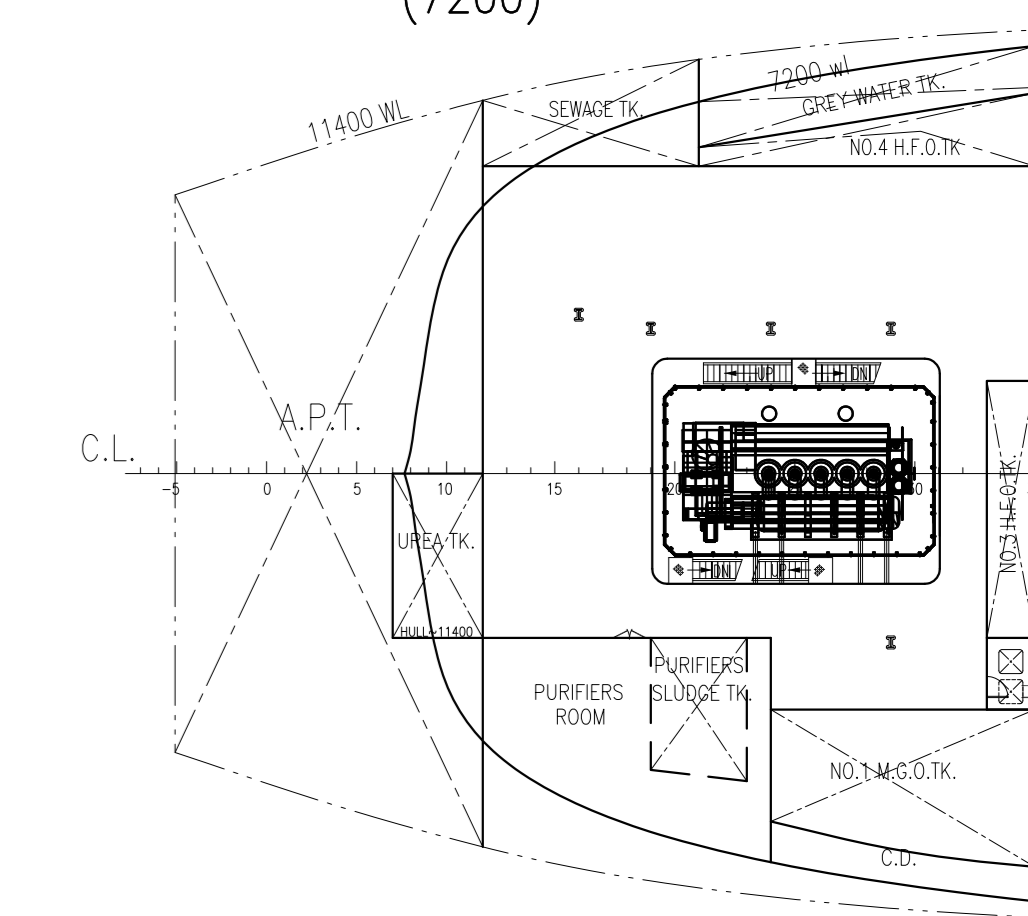
'F'CLE DECK



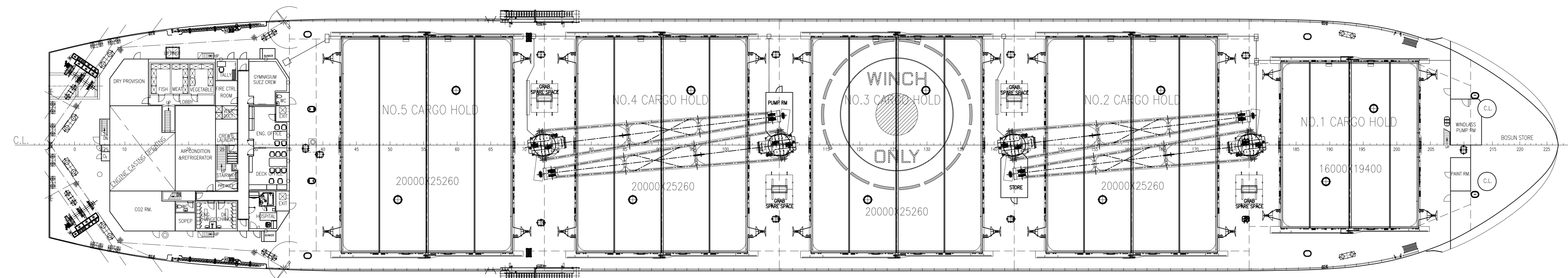
UPPER PLATFORM
(11400)



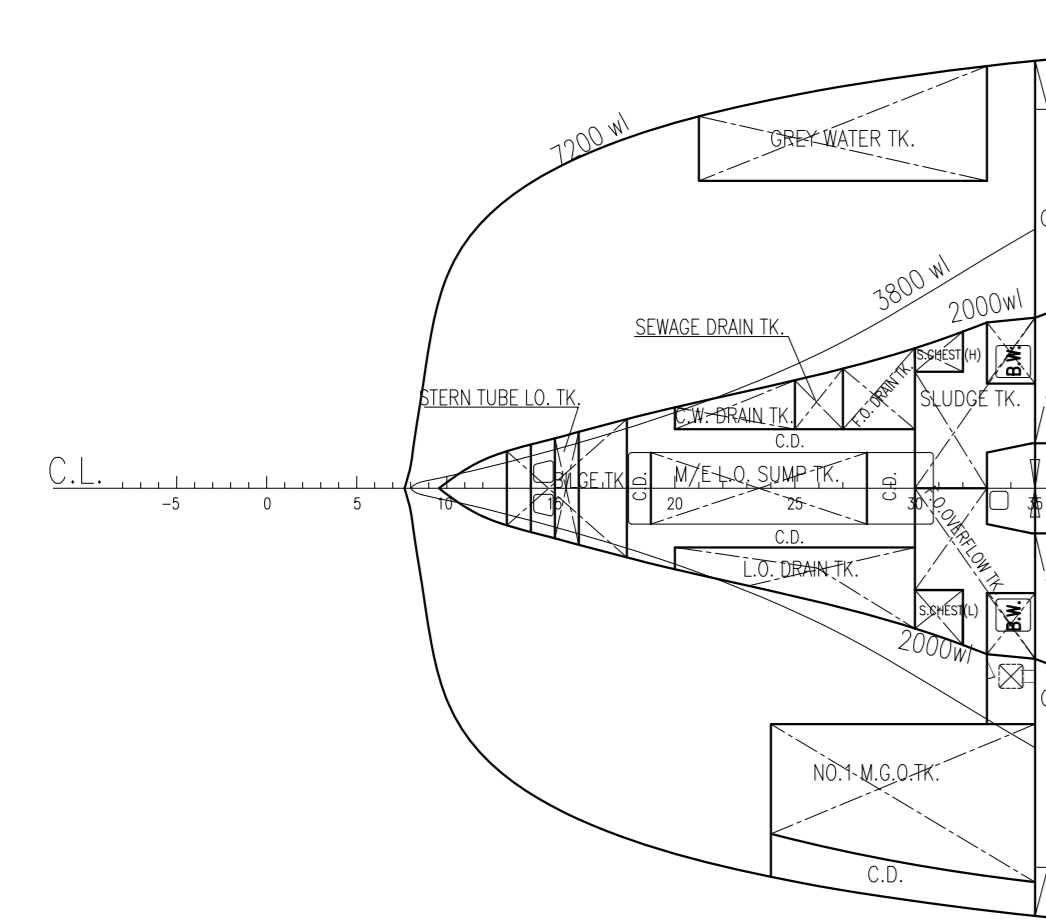
ER LOWER PLATFORM
(7200)



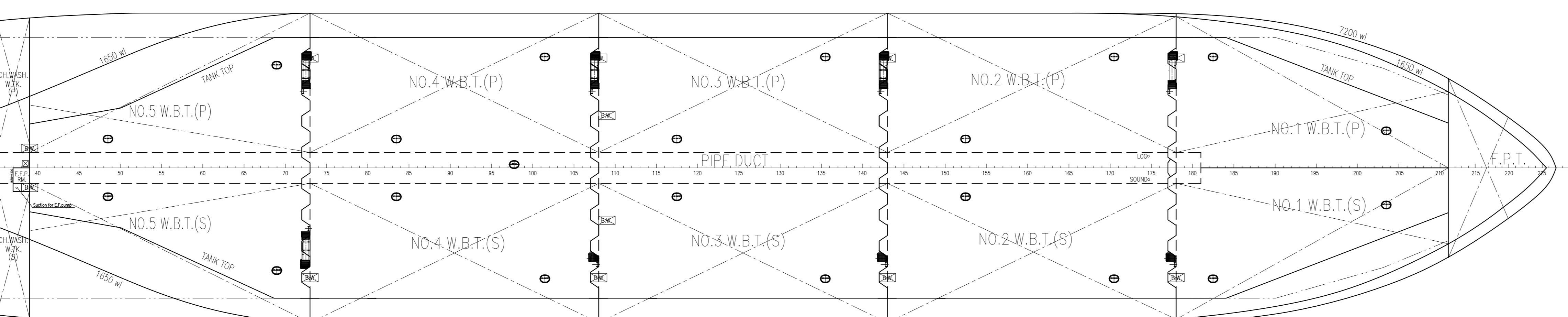
UPPER DECK



E.R. TANK TOP
(2000)



CARGO HOLD TANK TOP
(1650)



PRINCIPAL PARTICULARS

LENGTH O.A.	abt.179.90 m
LENGTH B.P.	176.85 m
BREADTH MLD.	30.00 m
DEPTH MLD.	15.20 m
SCANTLING DRAFT	10.95 m
DEADWEIGHT (SCANTLING DRAFT)	abt. 40,500 M.T.
CAPACITY IN CARGO HOLDS	abt. 50,500 m ³
MAIN ENGINE	
MAN 6SSOME-C9.7 Tier III + HPSCR	1 SET
MCR	9500kW x 125.0 rpm
SMCR	5500kW x 96.0 rpm
NCR (82% of SMCR)	4510kW x 89.9 rpm
COMPLEMENT	24P + 1PILOT
SPEED (Scantling full load, d=10.95m, NCR with 15% S.M.)	abt. 13.50 knots

CLASS NOTATION
 BV 1 *HULL *MACH Bulk Carrier, CSR, BC-A(holds 2,4 may be empty),CPS(WBT),
 ESP,GRAB[2S], BWT, LH-HG-SZ, GREEN PASSPORT
 Unrestricted navigation
 *VeriSTAR-HULL, *AUT-UMS, MON-SHAFT, INWATERSURVEY

BUILDER 船厂	JIANGMEN NANYANG SHIP ENGINEERING CO., LTD 江门市南洋船舶工程有限公司	HULL NO. 工程号	
TITLE 船型	40,500DWT BULK CARRIER(Double Skin with Open hatch) 40,500DWT散货船(双壳敞口)	DWG. NO. 图号	JNS405-00-02
DRAWING 图名	GENERAL ARRANGEMENT PLAN 总布置图	SCALE 比例	1:250
		PAGE 页数	1/1
		DATE 日期	