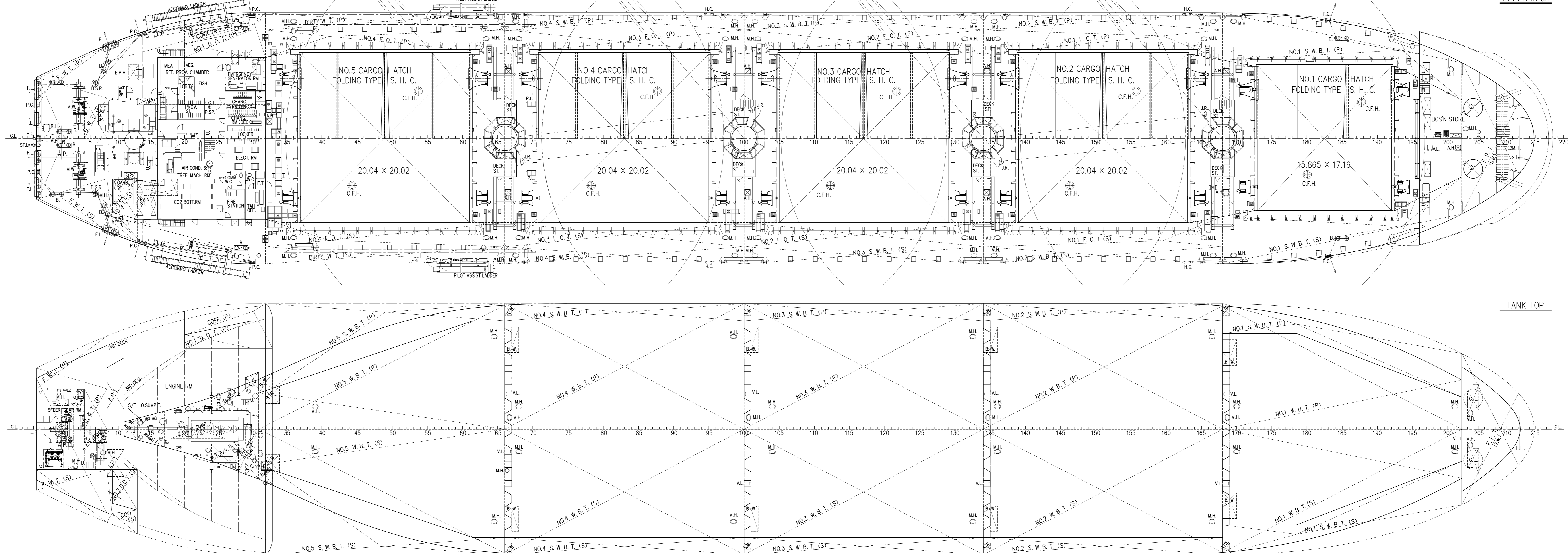
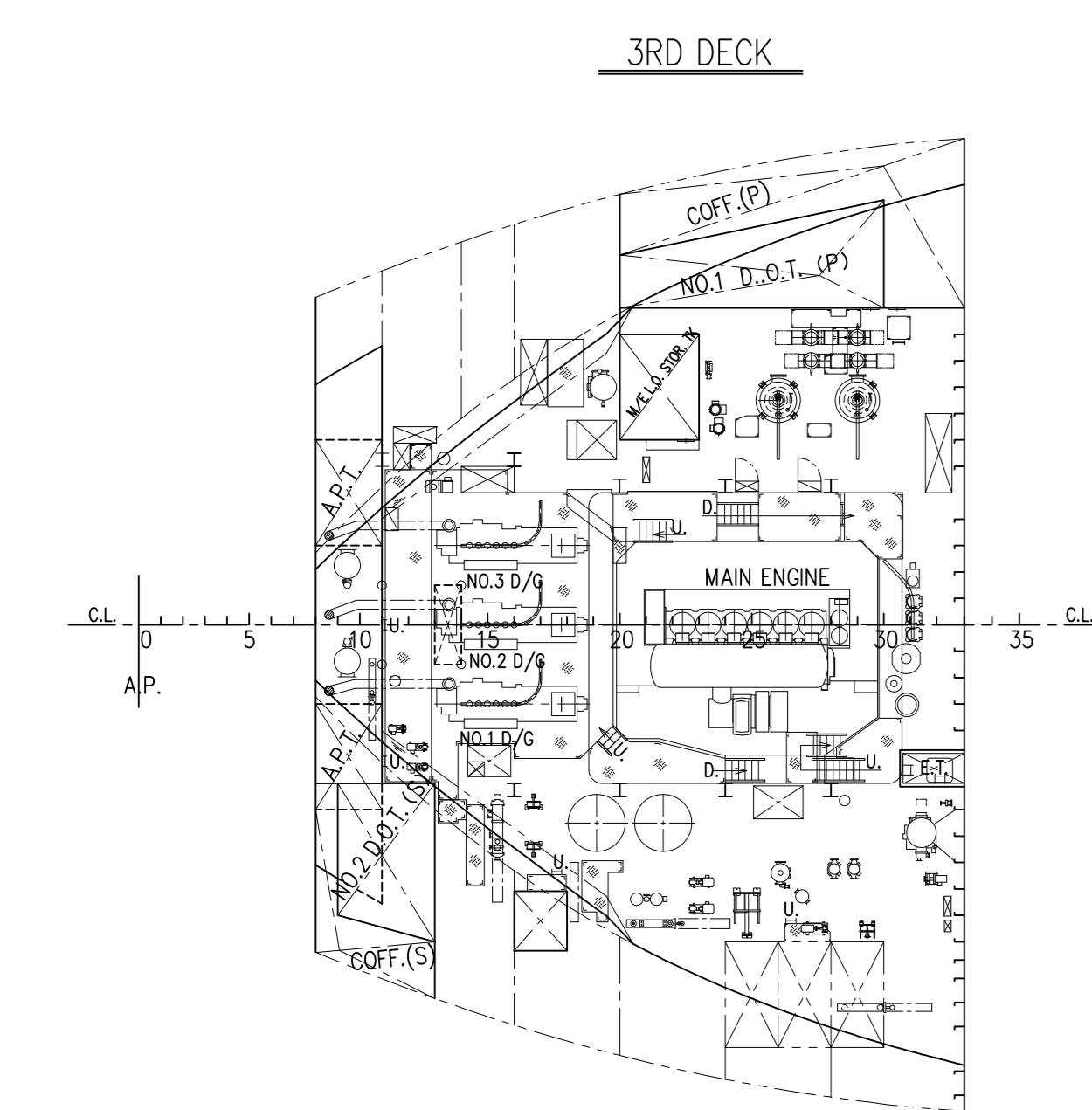
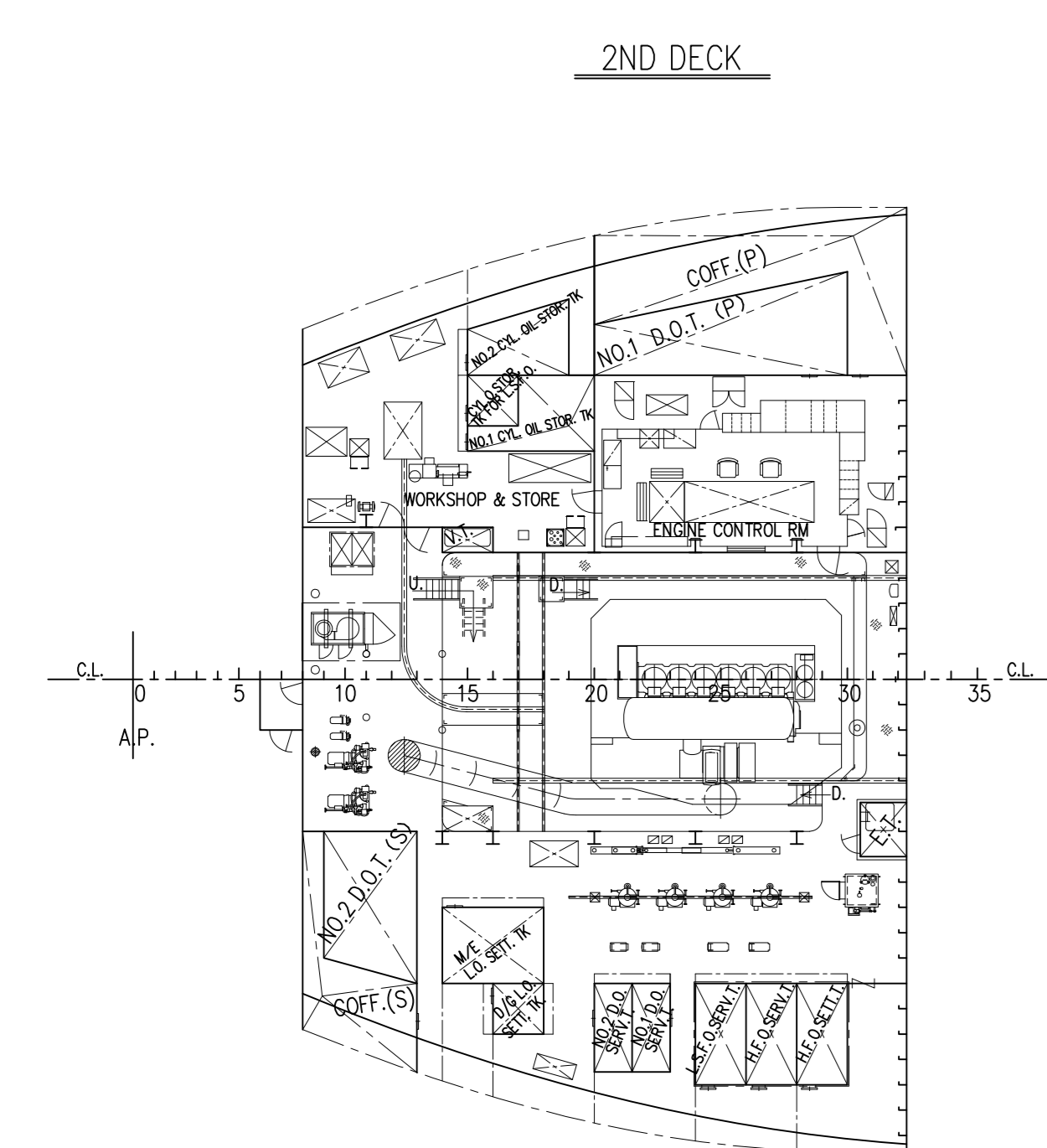
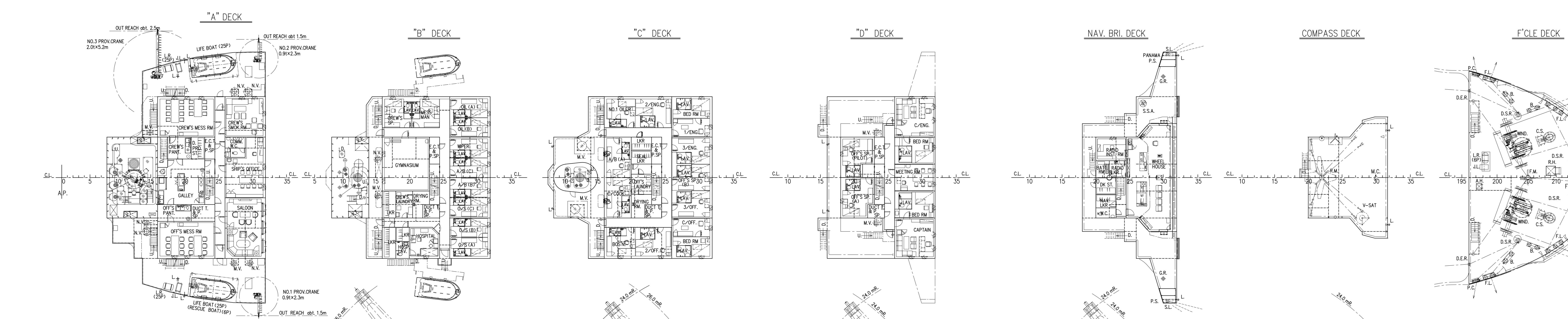
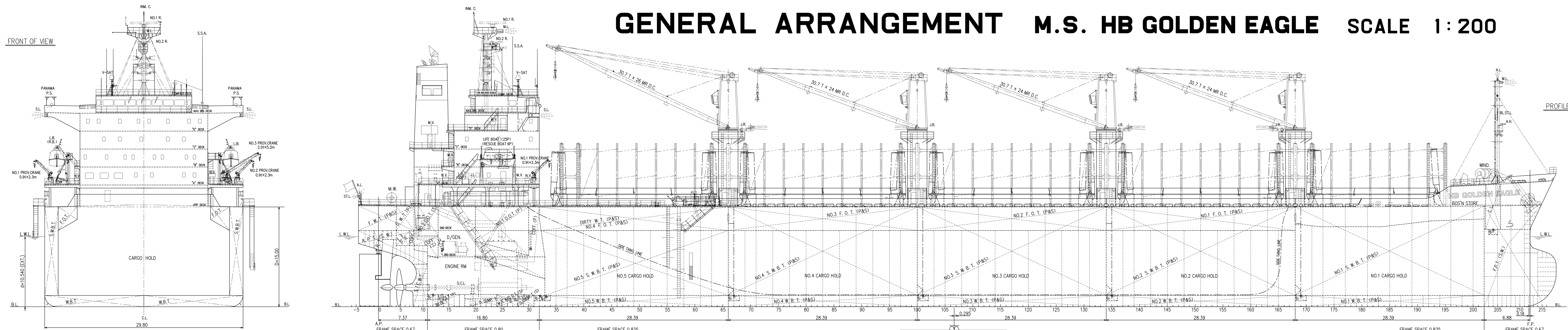


# GENERAL ARRANGEMENT M.S. HB GOLDEN EAGLE SCALE 1:200

HISTORY

DRAWN BY THIS WORKS.  
DATE: December 2, 2019



PRINCIPAL PARTICULARS	
LENGTH (O.A.)	179.97 m
LENGTH (B.P.)	173.00 m
BREADTH (MID.)	29.80 m
DEPTH (MID.)	15.00 m
DRAUGHT (at SUMMER EXTREME)	10.540 m
DEADWEIGHT (at ASSIGNED DRAUGHT)	37,720 MT
GROSS TONNAGE (I.C.T.M.)	23,230
NET TONNAGE (I.C.T.M.)	12,298
MAIN ENGINE	
MAXIMUM CONTINUOUS RATING	MAKITA-MITSUBISHI MAN B&W 6546ME-B8.5 x 1 set
NORMAL OUTPUT RATING	5,030 kW x 100 min <sup>-1</sup> (85% M.C.R.)
HOLD CAPACITY : (GRAIN)	46,994.86 m <sup>3</sup>
(BALE)	45,236.33 m <sup>3</sup>
SPEED	
SERVICE (d = 10.00 m (rounded) at NOR. Output of M/E 15 % S.M.)	abt. 14.25 knots
TRIAL MAX.	15.650 knots
CLASS AMERICAN BUREAU OF SHIPPING (ABS)	
CLASS NOTATION:	
+A1, (E), Bulk Carrier, SH, SHOM, BC-A (Holds 2 and 4 may be empty).	
+AMS, GRAB (20), BWT, CPS, CRC, RM, ESP, UMLD	

COMPLEMENT			
DECK PART	ENGINE PART	BUSINESS PART	
CAPTAIN	1	CHEF ENGINEER	1
CHIEF OFFICER	1	1ST ENGINEER	1
2ND OFFICER	1	2ND ENGINEER	1
3RD OFFICER	1	3RD ENGINEER	1
BOATSWAIN	1	NO.1 OILER	1
ABLE SEAMAN	3	OILER	2
ORD. SEAMAN	3	WIPER	1
TOTAL NUMBER OF OFFICER			8 P.
TOTAL NUMBER OF CREW			13 P.
OFFICER'S SPACE (JUNIOR OFFICER CLASS)			2 P.
OFFICER'S SPARE (PILOT) (JUNIOR OFFICER CLASS)			1 P.
CREW'S SPARE (RATING CREW CLASS)			1 P.
GRAND TOTAL			25 P.

SERIAL NO. B-02

The undersigned warrants that the holder of this vessel has not and will not prevent a material, component, product or system containing software for the vessel, in accordance with ABS Rules and 2010 International Code of Practices, adopting SOLAS Reg. II-1/3.5.2.

"Chemical Abstracts Service" (CAS) all material names and associated CAS numbers are listed below:

- Acetylene CAS 7536-46-1
- Acetylene Generator CAS 1172-73-5
- Acetylene CAS 7536-47-5
- Chloroacetylene CAS 10041-29-1
- Cresolite CAS 12001-29-1
- and Acetylene Generator CAS 7536-48-4\*

**CAUTION**

THIS DRAWING OR DOCUMENT IS THE PROPERTY OF MASABARI SHIPBUILDING CO., LTD. REPRODUCTION, COPYING, UTILIZATION FOR PURPOSES OTHER THAN AGREED, DISCLOSURE TO A THIRD PARTY, ARE STRICTLY SUBJECT TO PRIOR WRITTEN AGREEMENT BY MASABARI SHIPBUILDING CO., LTD.

FINISHED PLAN			
DESIGNED	MASABARI DESIGN OFFICE		
APPROVED	HULL & HULL-OUTFIT DESIGN TEAM		
CHECKED	S. F. KASAPPA		
DRAWN	S. Arudra		
SHIP NO.	CLASS	SCALE	DWG. NO.
S-H741	ABS	1/200	C-0200

M.S. "HB GOLDEN EAGLE"  
MO 9866550  
GENERAL ARRANGEMENT