

## MV: JINLING CONFIDENCE

## General

Class	NKK
Class notation	CSR BC-A BC-XII, GRAB[20]
Ship type	DHBC
Year built	JAN 2017
Yard	Nanjing Dongze
DD due	JAN 2022
SS due	JAN 2022

Flag	Philippines
Registry	Manila
Reg. nr.	MNLA000840
Call Sign	DUIU
IMO nr.	9798337
Telex	454895310
Phone	+870 773 908 613
Email	jinlingconfidence@amosconnect.com

## Speed &amp; Consumption

Laden	abt. 13 kts on abt. 19.5 IFO + abt. 0.5 MDO
Ballast	abt. 13 kts on abt. 17.5 IFO + abt. 0.5 MDO
Port Idle	abt. 2.0mt IFO + abt. 0.2mt MDO
Port WWW	abt. 4.5mt IFO + abt. 0.2mt MDO

Vessel consumes MDO when manoeuvring and sailing in narrow waterways and canals. Speed/Cons. upto Windforce BF 4/ Douglas sea state 3 and basis no adverse currents.  
Bunker specs: IFO ISO 8217:2017 (E) RMG 380 / MDO: ISO 8217:2017 (E) DMB or DMA  
However sulphur specs and each delivery and burning of specific types (grades) of bunkers always to comply with MARPOL regulations a/o EU directives a/o USA a/o any other national regulations including latest amendments.

## Principal dimensions

Length over all	179.95	m
Breadth moulded	32.00	m
Depth moulded	15.00	m
Summer draft	10.519	m
Summer dwt	38,917	MT
TPC (summer)	54.4	t/cm
GT/NT	25606/13035	T
Lightweight	9944.7	T
Suez (nett)	23646.08	T
Panama	21298	T

W/L-H/c Summer	6.38	m
W/L-H/c Ballast mid.	10.68	m
Keel – Top H/c	16.90	m
Keel – Top of mast	41.80	m
IFO capacity (85%)	802	m <sup>3</sup>
MDO capacity (85%)	39	m <sup>3</sup>
MGO(LS) cap. (85%)	257	m <sup>3</sup>
FW capacity (100%)	286.00	m <sup>3</sup>
Ballast cap. (100%)	16765	m <sup>3</sup>
Slop tanks (CH wash)	274	m <sup>3</sup>

## Operational restrictions

No mixing of new bunkers with bunkers already onboard.  
Vessel is only allowed to work single hook on a single hatch  
Constants could be affected due to vessel retaining onboard of hold cleaning water and/or grey water as per MARPOL regulations.

Bunker tank capacities could be affected due to vessel having to keep different IFO and MGO grades separated as a consequence of compliance with Marpol regulations a/o EU directives a/o USA a/o any other national regulations including latest amendments.

This vessel is member of an independent fuel testing system (LINTEC). Charterers or their representatives are always at liberty to witness the sampling during any bunkering of the vessel under the charter and any discrepancies found between suppliers sample and Lintec sample then the Lintec sample to be final and binding. As long as the Lintec test of the HFSO onboard has not been completed and the results approved vessel may have to use LSFO or MDO/MGO instead

## Cargospaces

Cap. (ft³)	Grain	Bale
C/H #1	272413	261515
C/H #2	396573	380710
C/H #3	386477	371019
C/H #4	396845	380971
C/H #5	343551	329810
Total	1795860	1724025

Floor space	LxBt/Ba/H(m)	Hatch Size(m)
C/H #1	25.44x4.14/19.42x13.8	9.6x20.8/6.4x16.2
C/H #2	27.87x26.94x13.8	20.00x27.00
C/H #3	27.06x26.93x13.8	20.00x27.00
C/H #4	27.86x26.94x13.8	20.00x27.00
C/H #5	27.89x24.93/4.50x13.8	20.00x27.00

drft(m)	Deadweight(t)
10.52	Summer 38971
10.75	Fresh 40196
10.74	Trop 40153
10.97	TropF 41380
10.30	Winter 37792

Ventilation	Nat.
Airchanges	-
CO2 fitted	Fitted
A60 bkhd	Fitted
Smoke det.	Fitted
Aussie fitted	Fitted
Dehumidifier	N/A

\*Note: In case of heavy cargoes to be loaded, the maximum quantity is to be in accordance with vessel's loading and stability booklets.

## Strength

	CH#1	CH#2	CH#3	CH#4	CH#5		
Hatchcovers	3	3	3	3	3	t/m <sup>3</sup>	*Not designed for cargo
Weatherdeck	3	3	3	3	3	t/m <sup>3</sup>	*Except betw. hatches
Tanktop	25	25	25	25	25	t/m <sup>3</sup>	*Local strength
Max. Mass	5900	8500	8300	8500	7400	t/m <sup>3</sup>	*Homogeneous loading
Steel coils	Standard coil loading: 20 T coils x 2 tiers (dimensions 2.0m x 1.8m) x 3 dunnages*						
*Note 1: Alternate hold loading condition (Nos. 2 & 4 may be empty)							
*Note 2: Other coil loading conditions are subject to owners approval of local stress calculations							

## Deck equipment

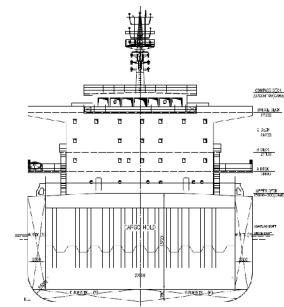
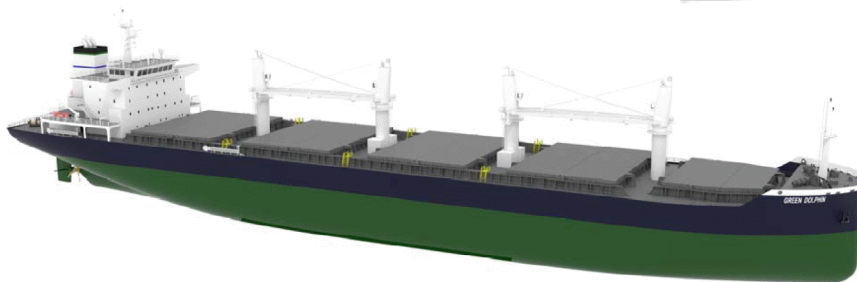
Hatch type	Hydr. End-folding type, DS
Maker	TTS
Cargo gear type	Electro hydr. 30t x 4 cranes
Maker	MHI
Outreach	10.00 mtr
Grab handling	24 T max. grab+cargo
Grabs fitted	NA

## Features

ITF fitted	National flag
Log fitted	No
WBTS fitted (AMS approved)	Yes
Lakes fitted	No
Suitable for grab discharge	Yes

## Machinery details

Main engine	MAN B&W 5S50ME-B9.3
CSR	4575 KW @ 89.9 rpm
Aux. engines	Yanmar 6 EY18ALW – 3 sets
Electrical	600KW/ 450V/ 50 Hz
Freshwater generator	Max. 10t/day



**All details "about" given in good faith, without guarantee.**