

## General

Class	NKK	Flag	Philippines
Class notation	CSR BC-A BC-XII,GRAB[20]	Registry	Manila
Ship type	DHBC	Reg. nr.	MNLA000840
Year built	JAN 2017	Call Sign	DUIU
Yard	Nanjing Dongze	IMO nr.	9798337
DD due	JAN 2022	Telex	tba
SS due	JAN 2022	Phone	tba
		Email	jinlingconfidence@amosconnect.com

## Speed &amp; Consumption

Laden	abt. 13 kts on abt. 23.5 IFO + abt. 0.5 MDO
Ballast	abt. 13 kts on abt. 20.5 IFO + abt. 0.5 MDO
Port Idle	abt. 2.0mt IFO + abt. 0.2mt MDO
Port WWW	abt. 4.5mt IFO + abt. 0.2mt MDO
Vessel consumes MDO when manoeuvring and sailing in narrow waterways and canals. Speed/Cons. upto Windforce BF 4/ Douglas sea state 3 and basis no adverse currents. Bunker specs: IFO ISO 8217:2010 (E) RMG 380 / MDO: ISO 8217:2010 (E) DMB or DMA However sulphur specs and each delivery and burning of specific types (grades) of bunkers always to comply with MARPOL regulations a/o EU directives a/o USA a/o any other national regulations including latest amendments.	

## Principal dimensions

Length over all	179.95	m	W/L-H/c Summer	6.38	m
Breadth moulded	32.00	m	W/L-H/c Ballast mid.	10.68	m
Depth moulded	15.00	m	Keel – Top H/c	16.90	m
Summer draft	10.519	m	Keel – Top of mast	41.80	m
Summer dwt	38,917	MT	IFO capacity (85%)	802	m <sup>3</sup>
TPC (summer)	54.4	t/cm	MDO capacity (85%)	39	m <sup>3</sup>
GT/NT	25606/13035	T	MGO(LS) cap. (85%)	257	m <sup>3</sup>
Lightweight	9944.7	T	FW capacity (100%)	286.00	m <sup>3</sup>
Suez		T	Ballast cap. (100%)	16765	m <sup>3</sup>
Panama		T	Slop tanks (CH wash)	274	m <sup>3</sup>

## Operational restrictions

No mixing of new bunkers with bunkers already onboard. Vessel is only allowed to work single hook on a single hatch Constants could be affected due to vessel retaining onboard of hold cleaning water and/or grey water as per MARPOL regulations.
Bunker tank capacities could be affected due to vessel having to keep different IFO and MGO grades separated as a consequence of compliance with Marpol regulations a/o EU directives a/o USA a/o any other national regulations including latest amendments.
This vessel is member of an independent fuel testing system (LINTEC). Charterers or their representatives are always at liberty to witness the sampling during any bunkering of the vessel under the charter and any discrepancies found between suppliers sample and Lintec sample then the Lintec sample to be final and binding. As long as the Lintec test of the HFSO onboard has not been completed and the results approved vessel may have to use LSFO or MDO/MGO instead

## Cargospaces

Capacities (ft <sup>3</sup> )	Grain	Bale	Floor space	LxB/Ba/H(m)	Hatch Size	d(ft)	Deadweight	Ventilation	Nat.
Cargohold #1	272413	261515	Cargohold #1	25.44x4.14/19.42 x13.8	9.6x20.8/6.4x1 6.2			Airchanges	-
Cargohold #2	396573	380710	Cargohold #2	27.87x26.94x13.8	20.00x27.00			CO2 fitted	Fitted
Cargohold #3	386477	371019	Cargohold #3	27.06x26.93x13.8	20.00x27.00			A60 bkhd	Fitted
Cargohold #4	396845	380971	Cargohold #4	27.86x26.94x13.8	20.00x27.00			Smoke det.	Fitted
Cargohold #5	343551	329810	Cargohold #5	27.89x24.93/4.50 x13.8	20.00x27.00			Aussie fitted	Fitted
Total	1795860	1724025						Dehumidifier	N/A

\*Note: In case of heavy cargoes to be loaded, the maximum quantity is to be in accordance with vessel's loading and stability booklets.

## Strength

	CH#1	CH#2	CH#3	CH#4	CH#5		
Hatchcovers	3	3	3	3	3	t/m <sup>3</sup>	*Not designed for cargo
Weatherdeck	3	3	3	3	3	t/m <sup>3</sup>	*Except betw. hatches
Tanktop	25	25	25	25	25	t/m <sup>3</sup>	*Local strength
Max. Mass	5900	8500	8300	8500	7400	t/m <sup>3</sup>	*Homogeneous loading

\*Note: Alternate hold loading condition (Nos. 2 & 4 may be empty)

## Deck equipment

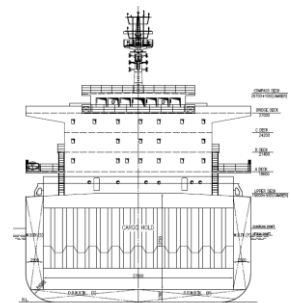
Hatch type	Hydr. End-folding type, DS
Maker	TTS
Cargo gear type	Electro hydr. 30t x 4 cranes
Maker	MHI
Outreach	10.00 mtr
Grabs fitted	-

## Features

ITF fitted	National flag
Log fitted	No
WBTS fitted (AMS approved)	Yes
Lakes fitted	No
Suitable for grab discharge	Yes

## Machinery details

Main engine	MAN B&W 5S50ME-B9.3
CSR	4575 KW @ 89.9 rpm
Aux. engines	Yanmar 6 EY18ALW – 3 sets
Electrical	600KW/ 450V/ 50 Hz
Freshwater generator	Max. 10t/day



All details "about" given in good faith, without guarantee.